

I-Li (Iodine-Lithium)

H. Okamoto

The Li-I phase diagram was unknown in [Massalski2]. [1962Dwo] measured solubility of I in LiI at 950 and 550 °C. The data points are shown in Fig. 1. The phase

boundaries in Fig. 1 illustrates the existence of a possible monotectic reaction just below the melting point of LiI.

Table 1 shows Li-I crystal structure data.

Table 1 I-Li crystal structure data

Phase	Composition, at.% I	Pearson symbol	Space group	Strukturbericht designation	Prototype
(βLi)	0	<i>cI2</i>	<i>Im</i> $\bar{3}m$	<i>A2</i>	W
LiI	50	<i>cF8</i>	<i>Fm</i> $\bar{3}m$	<i>B1</i>	NaCl

Reference

1962Dwo: A.S. Dworkin, H.R. Bronstein, and M.A. Bredig, Miscibility of Metals with Salts.VI. Lithium-Lithium Halide Systems, *J. Phys. Chem.*, 1962, **66**, p 572-573

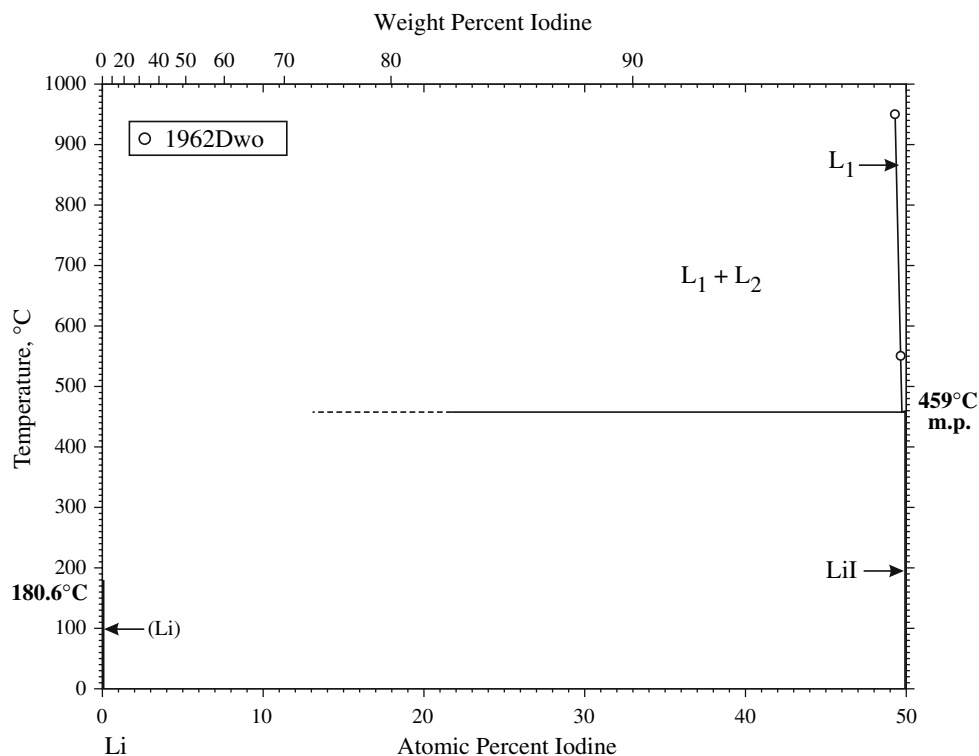


Fig. 1 I-Li phase diagram